

FOR LEASE

Belmeade Business Center
2,800-16,800 SF OW
Carrollton Texas, 75006



2910 Belmeade 2420 Tarpley

Carrollton, Texas 75006

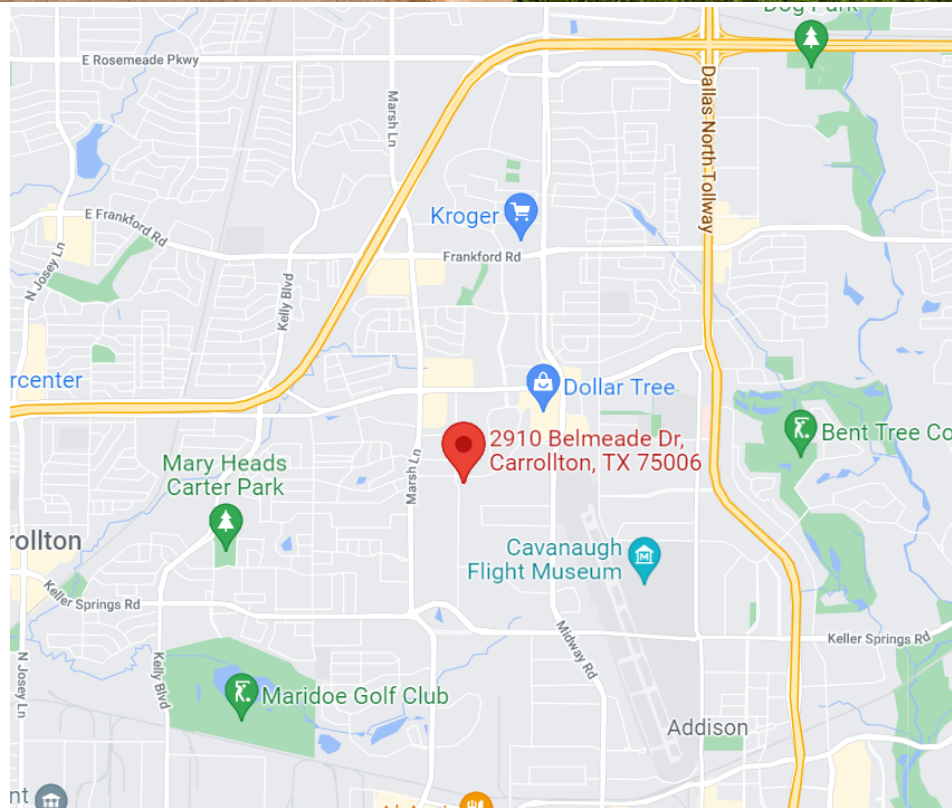
Property Features

- High end office/warehouse spaces available in the heart of Carrollton, TX
- Oversized grade level doors
- Space sizes from 2,800 SF to 16,800 SF
- +/-16' Clear height
- Strong accessibility to PGBT and DNT
- Professional ownership and property management

Available Suites

2410 - A	8,400 SF
2410 - B	8,400 SF

Total available 16,800 SF



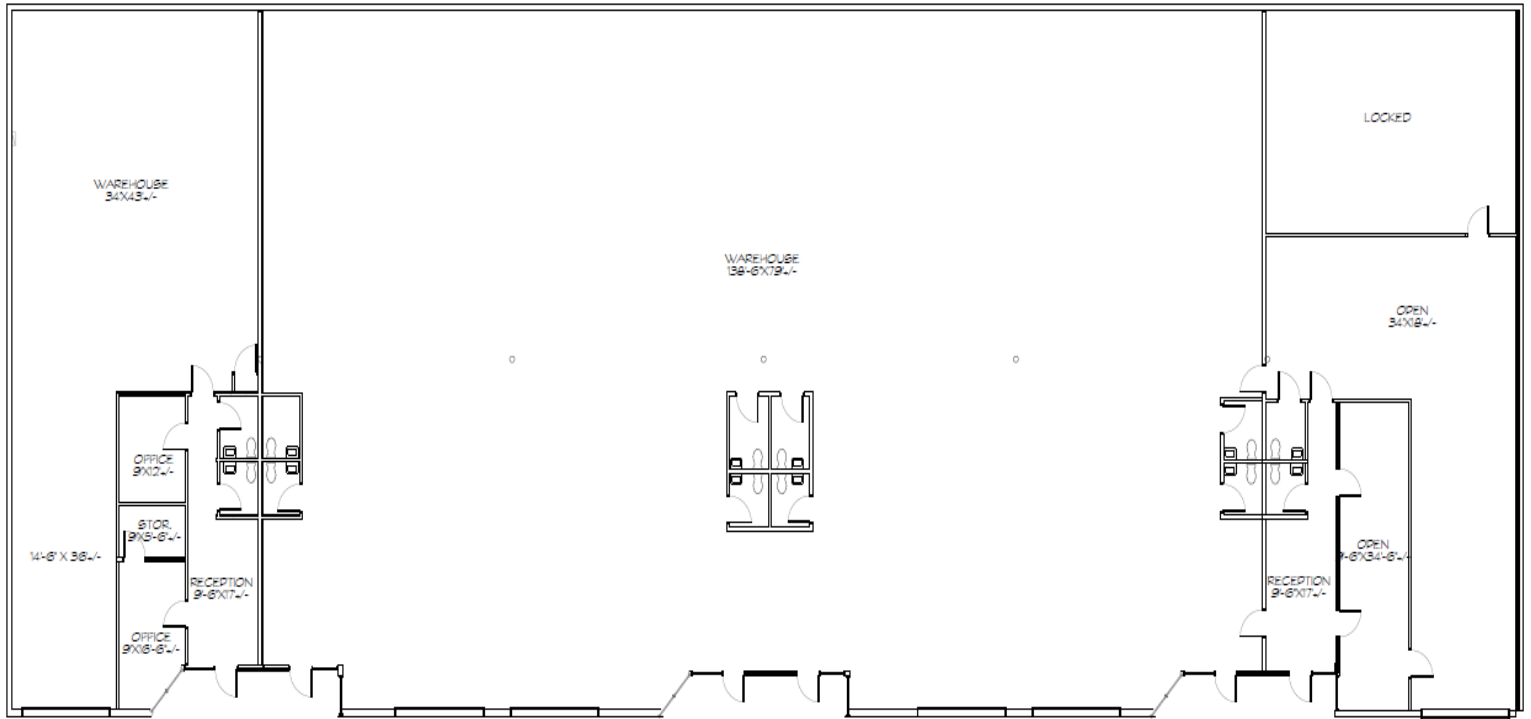
8,400-16,800
SF OW
spaces available

Belmeade Business Center

2910 Belmeade | 2410 Tarpley | 2420 Tarpley
Carrollton TX, 75006

2410 Tarpley

8,400 SF or 16,800 SF full building



Potential outdoor storage on East side of building

